

DRAWING NUMBER  
**25-62**

DRAWING NUMBER

DRAWING NUMBER

# FLAMANGO PARK

SUBDIVISION OF LOTS 5-6-7-8-9-10-11-12-13-14 BLOCK 1, ADDITION  
No. 1 FLA-MANGO GROVELETS - BOOK 20, PAGE 68, LOCATED  
IN THE SE 1/4 OF THE SW 1/4 OF SEC. 5, T. 44S.,  
R 43 E, PALM BEACH COUNTY, FLORIDA.

757

STATE OF FLORIDA  
COUNTY OF PALM BEACH  
This Plat was filed for record on this 23 day of July 1957, and duly recorded in Plat Book No. 25 on page 62  
ALEX ARNETTE, Clerk Circuit Court  
By J. W. Blackman, D. C.

### DEDICATION

STATE OF FLORIDA }  
COUNTY OF PALM BEACH } ss  
Know all men by these presents, that KEEMAC COMPANY, INC. a Florida Corporation of west Palm Beach, Florida, is the owner in fee simple of a tract of land in Palm Beach County, Florida, described as follows: Lots 5-6-7-8-9-10-11-12-13-14, Block 1, Addition No. 1, Fla-Mango Grovelets, located in the SE 1/4 of the SW 1/4 of Section 5, T. 44S., R. 43E., and recorded in Plat Book 20, on Page 68, has caused the same to be surveyed and platted as shown hereon and has hereby dedicated to the perpetual use of the public as public highways all Roads, Streets, Courts and utility easements, drainage ditch (Tract A), Lagoon and Park (Tract B) as shown are dedicated to the perpetual use of this development's owners only.  
In witness whereof said Corporation has caused these presents to be signed by its President, and attested by its Secretary, and its corporate seal to be affixed hereto, by and with the authority of its Board of Directors.

Keemac Company, Inc.  
By J. C. McKenzie  
President.  
Attest: H. C. Austin  
Secretary.

### Acknowledgement

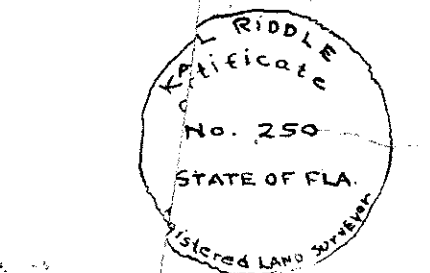
State of Florida }  
County of Palm Beach } ss  
I hereby certify, that on this day personally appeared before me, an officer duly authorized to administer oaths and take acknowledgements, J. C. McKenzie and H. C. Austin, personally known and known to be President and Secretary respectively of Keemac Company Inc. and they acknowledged before me that they executed the foregoing instrument in their official capacity as the act and deed of said corporation and by and with the authority of the Board of Directors of said Corporation.

Witness my hand and official seal at West Palm Beach Florida this 23 day of March 1957.  
My Commission expires: Oct 9 1959  
Sidney C. Wood  
Notary Public

### CERTIFICATE

STATE OF FLORIDA  
COUNTY OF PALM BEACH }  
I hereby certify that the plat shown hereon is a true and correct representation of a survey made by me and it is accurate to the best of my knowledge and belief and that permanent reference monuments (R.M.) have been set as required by law.  
Carroll A. ...  
Registered Professional Surveyor  
Florida Certificate No. 250

Subscribed and sworn to before me this 23 day of March 1957.  
Sidney C. Wood  
Notary Public  
My commission expires: Oct 9, 1959



NOTE: Setbacks to be as required by Palm Beach County Zoning Regulations.  
Approved July 22, 1957  
Board of County Commissioners  
Ray E. Michael, Jr.  
Chairman  
Stephen C. ...  
County Engineer

Filed  
Plat Book  
Page

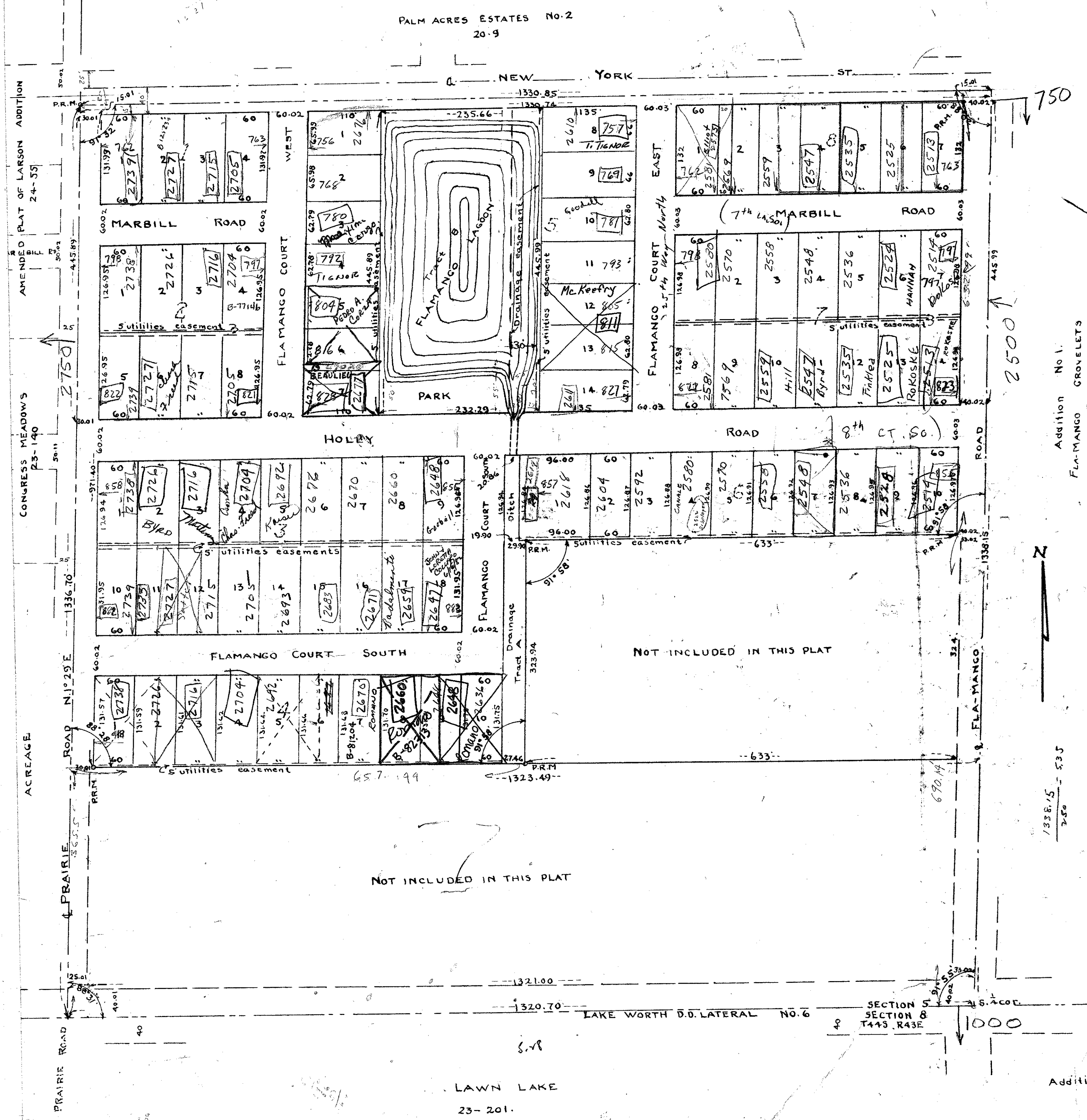
Scale 1" = 100'

Last Day of Survey 3-15

NOTE:  
There shall be no buildings or other structures placed on utility easements.  
There shall be no buildings or any kind of construction, or trees or shrubs placed on drainage easements.

Addition No. 1 Fla-Mango Grovelets  
20-69 Sheet 2

1000-355



NOT INCLUDED IN THIS PLAT

NOT INCLUDED IN THIS PLAT



PLANNING ENGINEER  
THE CALIFORNIA